

Aficio® 1055

The Digital Copy/Print System



**FOR MAXIMUM
PERFORMANCE**

RICOH®

Aficio®

1055



Aficio® 1055 Digital System

Acquiring the right high quality digital imaging system – one that's **powerful** enough to **SPEED THROUGH** copy/print jobs of all complexities while able to stand up to your ever expanding network needs – can make all the difference between merely getting the job done, and getting it done exceptionally well!

Featuring **55 PAGES PER MINUTE** plus an abundant 7,750-sheet total paper supply and professional finishing, the Aficio 1055 is all your business will ever need to create consistent superior quality output, whether you're printing multiple sets or making single copies.

Unsurpassed digital technology ensures ultimate image quality, productivity and reliability at significant time and cost savings for any department and business, especially when it's a Ricoh.

The Digital Networked Solution ◀

- 100-Sheet Automatic Reversing Document Feeder
- 7,750 Sheets of Paper
- Scan Once, Print Many
- 55 Pages per Minute
- Covers, Chapters, Page Numbering, Stamping, Stapling and Hole Punching
- Large Touch Panel Display
- Document Server Capability

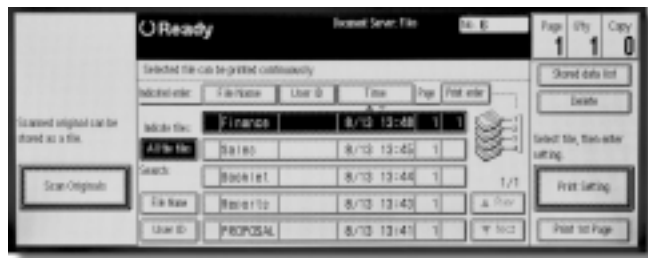


Manage Your Documents

The Aficio 1055's highly productive standard **DOCUMENT SERVER** features leading-edge technology that provides seamless operation and ultimate flexibility for document processing.

The sophisticated Document Server creates a suite of diverse, innovative solutions to boost printing productivity. Not only can you set various printing conditions such as Covers, Chapters, Stamping, Stapling and Hole Punching, you can also perform a host of other capabilities including:

- File Merge Printing
- Scanned Page Printing
- Print-on-Demand
- Locked Printing
- Sample Printing



Flexible Stamping Functions For Customized Documents

You can select from several useful **STAMP** functions featured on the Aficio 1055 to jazz up reports, memos, booklets, etc. from a designated page in one of six patterns and any of six print positions. Choose from a variety of stamps including:

- Preset Stamps
- Page Numbering
- User Stamps
- Date Stamping
- Background Numbering

Background Numbering



Preset Stamp



PERFORMANCE

▶ High Speed Network Printing

Full-service **55 PAGE-PER-MINUTE** performance and total document production convenience are yours with the affordable Aficio 1055, featuring laser output up to 2,400 x 600 dpi with edge smoothing. Support is standard for PCL6/PCL5e and an option for genuine Adobe® PostScript® 3™, ensuring compatibility with all of today's most popular applications.



Booklet printing, slip sheets, two-sided printing, covers, stapling, hole punching or watermarks are just some of the options available with a point and click on the driver.



Finished to Perfection ◀

The Aficio 1055 offers users **FINISHING CAPABILITIES** to easily complete any type job quickly, professionally and cost-effectively!

The optional 3,000-sheet SR870 Finisher, offers a 50-sheet multi-position staple capacity. This finisher also offers an optional Two or optional Three Hole Punch unit, which punches output individually as it exits the system eliminating any capacity limitation or decrease in productivity. The unique Pre-Stack Function inherent in the system is an internal dual paper path design...so the system can print at the most productive speed.

To double productivity, you can link two Aficio 1055's together, via the Connect Copy/Connect Print Option to perform at an astounding 110 pages per minute! There's no limit to the productivity you can achieve when incorporating these powerful Ricoh digital imaging systems into your workplace!



Aficio® 1055 Digital System



Aficio® 1055 Specifications



Engine Specifications

Image Process	Dry process, Dual Component
Reading Element	CCD Image Sensing Element
Resolution	600 dpi
Gray Scale	256 levels
Power Source	120V/60Hz/20A
Dimensions (WxDxH)	27.2" x 29.6" x 44.9"
Weight	414.5 lbs.

Copier Specifications

Configuration	Console
Warm Up	5.5 minutes
First Copy	3.5 seconds
Multicopy Speed	55 copies/minute (letter-size)
Standard Memory	48 MB, 20 GB
Quantity Indicator	1 to 999
Original Type	Book/Sheet
Original Size	Up to 11" x 17"
Copy Size	5 1/2" x 8 1/2" to 11" x 17"
Copy Type	Plain Paper, Transparencies
Paper Supply	1,550 sheets x 2 trays (Tandem) 550 sheets x 2 trays
Bypass	50 sheets
Paper Weight	14 lb. - 34 lb. Bond (Front Trays) 14 lb. - 43 lb. Bond (90 lb. Index-Bypass Tray)
Reproduction Ratios	50%, 65%, 73%, 78%, 85%, 93%, 100%, 121%, 129%, 155%, 200%, 400%
Zoom	25% - 400% in 1% increments

Accessories

Automatic Reversing Document Feeder (Standard)

Type	Automatic Reversing Document Feeder
Original Size	5 1/2" x 8 1/2" to 11" x 17"
Original Weight	Simplex: 11 lb. - 42 lb. Bond Duplex: 14 lb. - 34 lb. Bond
Original Tray Capacity	100 sheets

RT44 Large Capacity Tray

Capacity	3,500 sheets
Paper Size	8 1/2" x 11"
Paper Weight	14 lb. - 43 lb. Bond
Dimensions (WxDxH)	15.9" x 20.8" x 23.9"
Weight	48.6 lbs.

SR870 Finisher with 50-Sheet Stapler

Paper Size	5 1/2" x 8 1/2" to 11" x 17" (Proof/Shift Tray) 8 1/2" x 11" to 11" x 17" (Staple/Punch Mode)
Paper Weight	Stack: 14 lb. - 42 lb. Bond (90 lb. Index)
Staple:	17 lb. - 20 lb. Bond 14 lb. - 90 lb. Index (2/3 holes)
Stack Capacity	
Shift Tray	3,000 sheets (8 1/2" x 11") - w/o Punch 1,500 sheets (8 1/2" x 11" or larger) - w/o Punch 100 sheets (5 1/2" x 8 1/2") - w/o Punch 2,500 sheets (8 1/2" x 11") - w/Punch 1,500 sheets (other paper sizes) - w/Punch 100 sheets (5 1/2" x 8 1/2") - w/Punch 250 sheets (8 1/2" x 11" or smaller) - Proof Tray w/o Punch 50 sheets (8 1/2" x 11" or larger) - w/o Punch 200 sheets (8 1/2" x 11" or smaller) - w/Punch 50 sheets (8 1/2" x 11" or larger) - w/Punch
Staple Capacity	50 sheets (8 1/2" x 11" or smaller) - w/Punch 30 sheets (8 1/2" x 11" or larger) - w/Punch 40 sheets (8 1/2" x 11" or smaller) - w/o Punch 25 sheets (8 1/2" x 11" or larger) - w/o Punch
Staple Paper Size	8 1/2" x 11", 8 1/2" x 14", 11" x 17"
Staple Positions	Top, Bottom, 2 Staples, Top Slant
Dimensions (WxDxH)	24.7" x 21.5" x 37.8"
Weight	99.3 lbs.

Copier Accessories

Copy Connector Kit Type 700
Copy Tray Type 1075
Key Counter Bracket Type D
8 1/2" x 14" Tray Kit Type 1055 (for RT44 LCT)
3 Hole Punch Type 850
2 Hole Punch Type 850

Printer Controller Type 1055 Specifications

Print Speed	55 ppm
Interface	Network Interface Card 10/100Base T (option) Parallel Port (IEEE 1284)
Network Protocol	TCP/IP, IPX/SPX, EtherTalk
Language	PCL5e/PCL6 (standard) Adobe PostScript 3 (option)
Resolution	PCL6: 600 dpi / PCL5e 300/600 dpi PS3: 600 dpi
Memory Capacity	32 MB SDRAM DIMM (standard) Optional SIMM (up to a total of 256 MB SDRAM DIMM)
Drivers for PCL5e/PCL6*	Windows 95, 98, NT, 2000, XP
Drivers for PS3*	Windows 95, 98, NT, 2000, XP, Macintosh
Fonts for PCL5e/PCL6	35 Intellifonts 10 TrueType fonts 1 Bitmap font
Fonts for PS3	136 PostScript fonts
Printer Features	Booklet Mode Cover OHP Slip Sheet Sample Print

Document Server Specifications

Number of Jobs	Up to 200
Resolution	600 dpi, 4 level (Scanning Data) 600 dpi binary (Electronic Data)
Speed	55 ppm
User ID	Max. 8 letters (Alphanumeric)
File Name	Max. 8 letters (Alphanumeric Option)
Password	Max. 4 digits (Numeric Option)
Support OS	Windows 95, 98, NT, 2000, XP, Macintosh
Support Printer Language	PCL5e/PCL6, PostScript 3
Document Server Features	Booklet/Magazine Mode Change File Name Connect Copy/Print Job Preset (8 Jobs) Save Printing Conditions with Document Date Sort By User ID or Time Search by File Name Locked Print

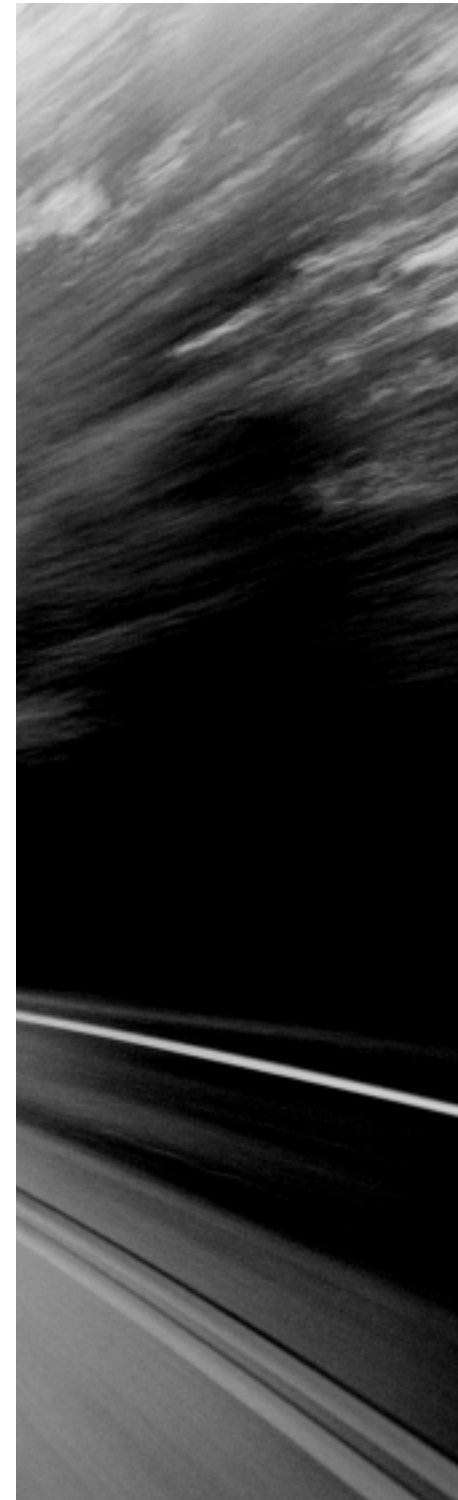
Printer Accessories

Adobe PostScript 3 Type 700
Printer Hard Disk Drive Type 850
Network Interface Board Type 450-E
32MB Memory Type 850
64MB Memory Type 850
128MB Memory Type 850

Note: Specifications are subject to change without notice.

Ricoh Consumables. For maximum performance and yield, we recommend using genuine Ricoh parts and supplies.


* May denote mini driver.



Aficio® 1055

Configured to Meet Your Requirements

Copier Configuration	Copier/Printer Configuration
<ul style="list-style-type: none"> ■ Aficio 1055 System ■ Large Capacity Tray ■ Finisher 50 Sheet (SR870) ■ 3 Hole Punch 	<ul style="list-style-type: none"> ■ Aficio 1055 System ■ Large Capacity Tray ■ Finisher 50 Sheet (SR870) ■ 3 Hole Punch ■ Printer Controller Type 1055 ■ Network Interface Board Type 450-E ■ Printer Memory Type 850 (32 MB, 64 MB or 128 MB) ■ Printer HDD 6.0 GB Type 850 ■ Adobe PostScript3



Shown with SR870 Finisher and Large Capacity Tray

Features

- | | | | |
|---|---|--|--|
| <ul style="list-style-type: none"> ■ Auto Duplex ■ Auto Image Density ■ Auto Paper Select ■ Auto Reduce/Enlarge ■ Auto Start ■ Auto Tray Switching ■ Book Copy ■ Booklet Mode ■ Centering ■ Chapters (20) | <ul style="list-style-type: none"> ■ Combine Originals ■ Connect Copy (Option) ■ Covers/Slip Sheets ■ Directional Magnification ■ Document Server ■ Double Copy ■ Electronic Sorting ■ Erase Center, Border ■ Image Rotation ■ Image Repeat | <ul style="list-style-type: none"> ■ Interrupt ■ Job Program (10) ■ Job Preset (8) ■ Magazine Mode ■ Margin Adjustment ■ Mixed Size Originals ■ Paper Designate ■ Photo Mode ■ Repeat Copy ■ Sample Copy | <ul style="list-style-type: none"> ■ Scan Once, Print Many ■ Series Copying ■ Shrink and Center ■ Size Magnification ■ Stamping ■ Timers ■ User Codes (500) ■ Weekly Timer |
|---|---|--|--|



EPA 2000 Office Products Partner of the Year (5th consecutive year)
EPA 2000 Labeling Partner of the Year
 Ricoh Corporation has determined that this product meets the Energy Star® guidelines for energy efficiency.



Ricoh Company, Ltd. has been granted a certificate of ISO 9001, which is the International Standard for Quality Systems.

RICOH®

Image Communication

Ricoh Corporation, Five Dedrick Place, West Caldwell, NJ 07006
 Phone: (973) 882-2000 • www.ricoh-usa.com