

Superior Office
Document Management
& Security

Aficio™ 2051/2060



RICOH
Image Communication

Imagine a Central Document Platform that Empowers your Office Productivity

In today's business, vast amounts of electronic and hard copy information must be processed each day. This puts an ever growing strain on your organisation's productivity. How much time does your team spend on producing, filing, retrieving, protecting and sharing information? With undisputed market leadership in the field of multifunctional office document processing, Ricoh is the expert when it comes to identifying opportunities for productivity gains and cost savings. We listen to your needs, assess your workflow and propose solutions that streamline the way your office works. As a result, the Aficio™2051/2060 could well become the heart of your organisation's document workflow. They deliver fast document sharing, impeccable copy and print quality, impressively finished documents and seamlessly integrated document security management. Everything comes together in these powerful new document platforms.



You Visualise, the Aficio™2051/2060 Deliver

Your office system may perform just nicely but does it offer the ease of use, features and speed you require? Consider a solution with the Aficio™2051/2060 at the heart. They deliver what it takes for your office workflow to reach new heights of efficiency, productivity and protection of the information you daily process.

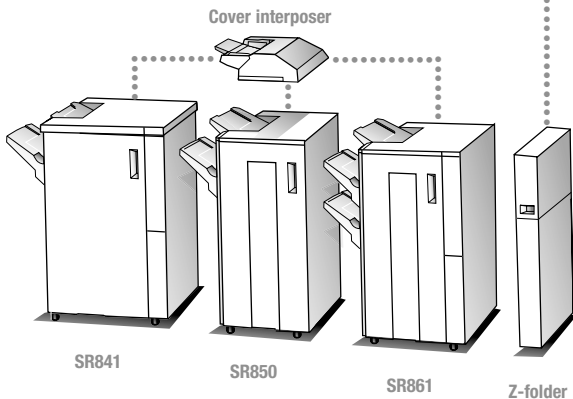


Quick & Professional Finishing

In need of professionally stapled or punched sets? Would you like to include A3 size data in your A4 documents? Or hand out completely finished booklets with sturdy cover and chapter separation? With the Aficio™2051/2060 you have reliable finishing experts at your disposal. No other office systems in this class offer such an extensive range of finishing options.



Print complex A3 charts or tables & include them in A4-sized output with the z-folder.

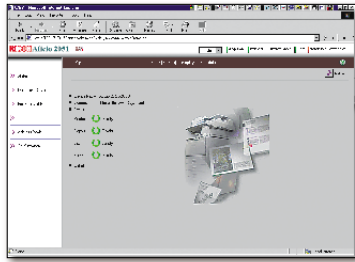


No matter how you visualise your output, the Aficio™2051/2060's range of versatile finishing options produce it.



Produce without Intervention

Paper refills always come at a bad time. With a maximum capacity of 8,300 sheets, the Aficio™2051/2060 go a long way before that happens. And even when it does, you can add paper without interrupting the process.



Obtain your Output Instantly

Save time on document handling and get going right away. The Aficio™2051/2060 warm up in only 30 seconds (10 seconds from low power mode), scan documents at up to 75 pages per minute and produce duplex output at simplex speeds. You will have time to spare!

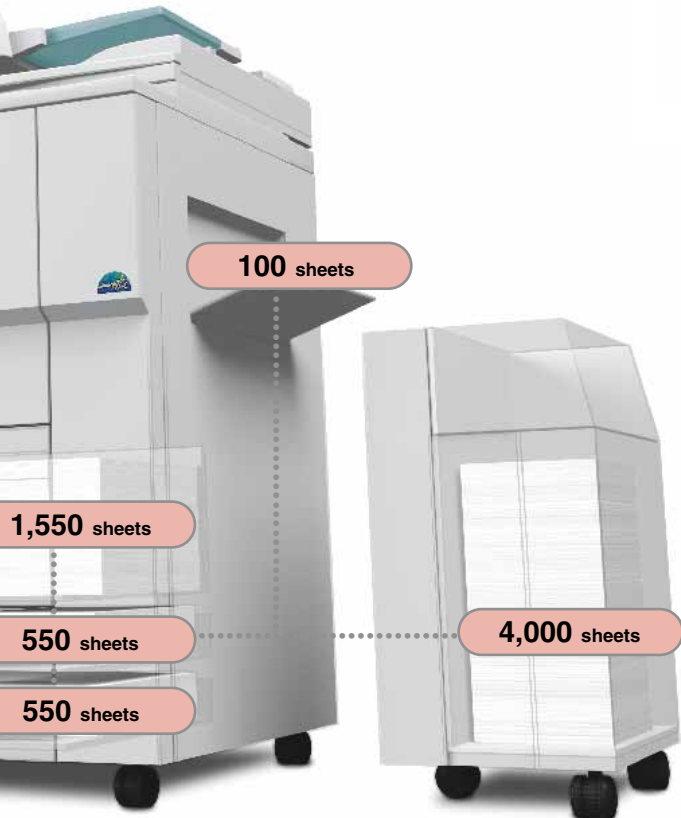
Included Software Solutions

The Aficio™2051/2060 come with software to further tailor their functionality to your needs.

- Web Image Monitor (embedded): document management, central device configuration & user access management via your web browser.
- DeskTopBinder™ V2 Lite: user friendly document portal for archiving, retrieval & compilation of separate files of various formats into single documents.



Route jobs to the most appropriate device and save considerably on print costs.



Additional Solutions to Meet your Needs

Ricoh's optional enterprise class software solutions help you further improve efficiency and performance. doc-Q-route increases productivity and saves costs by automatically routing documents to the best suited device. The Aficio™2051/2060 fit seamlessly into the service driven solutions for your IT resource management. UNIX/Linux connectivity is achieved through a convenient installer programme, without complex scripting. Ricoh Device Types offer full SAP® R/3® printing functionality while Equitrac Office™ lets you monitor and manage your business's print/copy costs.



Embedded Software Architecture™

Moving New Ideas Forward

To meet your unique business requirements, the Aficio™2051/2060 are among the first to feature Ricoh's new Embedded Software Architecture™. This innovative Java™ (J2ME) compatible software development platform allows the design of customised key applications for Ricoh MFPs and laser printers. These solutions control the way the Aficio™2051/2060 interact with your document workflow. For more information, please visit www.ricoh-developer.com.

The image on these pages is not a real photograph and slight differences in detail might appear.

With Regards to the Environment

Like all Ricoh products, the Aficio™2051/2060 reflect Ricoh's commitment to the environment with the usage of toxic free materials and low energy toner production. Significant energy savings are also obtained thanks to advanced new power saving modes (ready in 30 seconds from off mode and 10 seconds recovery time from low power mode).

Looking at the Bigger Picture of your Document Workflow

Document management is about getting the right information to the right people, in the right format, at the right time. This requires frequent conversion of hard copy information into digital data and vice versa via flexible functionality and single button operation. Ricoh proposes complete solutions that seamlessly integrate with your existing networking infrastructure. As their backbone, the Aficio™2051/2060 enable your organisation to grow to new levels of productivity and competitive force.



With Ricoh's security solutions your personal and confidential documents remain exactly that way.

Reduce to the Max

Multiple desktop devices bring about high running costs, an overburdened IT helpdesk and expensive consumables. One powerful multifunctional device can take over the role of several desktop printers, copiers and scanners. Simply let the Aficio™2051/2060 handle all your office document tasks. Even for long runs and sophisticated finishing, you no longer need a host of equipment or outsourcing.

Minimise Indirect Costs

How much time do you spend on document processing? Indirect costs are often invisible. Most print jobs are not sent to the best suited device, while a lot of savings can be captured by automatic routing. Time lost on complex operation, recharging consumables or waiting for devices to warm up, jeopardises your organisation's efficiency. Our experts can show you how the Aficio™2051/2060 help you avoid these indirect costs and increase your office productivity instead.

Accelerate your Workflow

How do you share a document? Chances are it is currently printed on a nearby desktop printer, copied, manually sorted, stapled and bound. Why lose precious time when the entire job can be done automatically with a few mouse clicks? Your document is produced at blazing speed and delivered in neatly finished sets, ready for distribution.

Be Direct

Distributing large documents to remote recipients can be a tedious task. To avoid delays and expensive couriers, the Aficio™2051/2060 let you scan and send documents directly to any e-mail address in the company network address book (using LDAP). Alternatively, you can distribute via shared or personal network folders, or simply publish on the web using FTP.

Protect your Data

Think about how easily digital data can be copied and distributed. How can you protect valuable data from being copied, printed or e-mailed by unauthorised people? Access to the Aficio™2051/2060's functions can be individually managed and seamlessly integrates with your existing Windows® authentication infrastructure. The systems' Locked Print™ function enables you to hold confidential documents in memory until you unlock them. To make sure no sensitive information is left behind, temporary data on the Aficio™2051/2060's Hard Disk Drive is automatically overwritten beyond recovery by Ricoh's Data Overwrite Security function (option). And as all data communication from and to the Aficio™2051/2060 can be encrypted, these systems substantially contribute to the overall security of your company network.



Cut indirect costs, speed up the workflow and produce impeccable output: guaranteed smiles around the office!



Aficio™ 2051/2060

Specifications



COPIER

Copying process:	Four laser beam & electro photographic printing	
Copy speed:	51/60 copies per minute ¹	
Resolution:	Output:	1,200 dpi
	Scan:	600 dpi
Multiple copy:	Up to 999	
Warm up time:	30 seconds (10 seconds from standby mode)	
First output speed:	4.2 seconds	
Zoom:	25 - 400% (in 1% steps)	
Memory:	Standard:	128 MB + 40 GB Hard Disk Drive
	Maximum:	384 MB + 40 GB Hard Disk Drive
Paper input capacity:	Standard:	2 x 1,550-sheet tandem trays 2 x 550-sheet paper trays 100-sheet bypass tray
	Maximum:	8,300 sheets
Paper output capacity:	Maximum:	3,750 sheets
Paper size:	A6 - A3	
Paper weight:	Paper trays:	53 - 128 g/m ²
	Bypass tray:	53 - 216 g/m ²
	Duplex tray:	64 - 128 g/m ²
Duplexing:	Standard	
Dimensions (W x D x H):	690 x 760 x 1,165 mm	
Weight:	Less than 203 kg	
Power source:	220 - 240 V, 50/60 Hz	
Power consumption:	Maximum:	Less than 1.75 kW

PRINTER/SCANNER (option)



Printer

Print speed:	51/60 prints per minute ¹	
Printer language/resolution:	Standard:	PCL5e: Up to 600 x 600 dpi PCL6/RPCS™: Up to 1,200 x 1,200 dpi
	Option:	Adobe® PostScript® 3™: Up to 1,200 x 1,200 dpi
Interface:	Standard:	Fast Ethernet Parallel Port
	Option:	Wireless LAN (IEEE 802.11b) FireWire (IEEE 1394) USB 2.0 Bluetooth
Memory:	384 MB + 40 GB Hard Disk Drive (shared with copy function)	
Network protocol:	TCP/IP, IPX/SPX, SMB, AppleTalk	
Supported networks:	Windows® 95/98/Me/NT4.0/2000/XP Server 2003 Novell® NetWare® 3.12, 3.2, 4.1, 4.11, 5.0, 5.1, 6 UNIX Sun® Solaris 2.6/7/8/9, HP-UX 10.x/11.0 SCO OpenServer 5.0.6 RedHat® Linux 6.x/7.x/8.x IBM® AIX v4.3/5L v5.1 Macintosh 8.6 - 9.2.x (OS X Classic) Macintosh X v10.1 or later (native mode)	



Scanner

Scan speed:	75 originals per minute (A4)	
Resolution:	600 dpi (TWAIN: 1,200 dpi), 256 level greyscale	
Maximum original size:	A3	
Output formats:	PDF, JPEG, TIFF	
Bundled drivers:	Network TWAIN	
Scan to e-mail:	Authentication:	SMTP or POP3 before SMTP
	Destination address selection:	Via LDAP, local address book or direct input
Destination addresses:	Up to 500 from local address book Up to 100 via LDAP	
Stored destination addresses:	Maximum 2,000	
Scan to folder:	Via SMB or FTP protocol, up to 50 folders per job	



Software

- SmartDeviceMonitor™ for Admin/Client
- Web Image Monitor (embedded)
- DeskTopBinder™ V2 Lite
- TWAIN driver
- Printer utility for Macintosh
- Agfa Font Manager

OTHER OPTIONS

- 4,000-sheet large capacity tray (RT43)
- Cover interposer
- 3,000-sheet finisher with 100-sheet stapler (SR841)
- Jogger unit for finisher SR841
- 3,000-sheet finisher with 50-sheet stapler (SR850)
- 3,000-sheet booklet finisher (SR861)
- 9-bin mailbox (CS390)
- 2/4 hole punch unit
- Z-folder
- Data Overwrite Security Unit
- File Format Converter
- Copy Connect kit
- Adobe® PostScript® 3™ module
- Wireless LAN (IEEE 802.11b) interface
- FireWire (IEEE 1394) interface
- USB 2.0 interface
- Bluetooth interface

OPTIONAL SOFTWARE

- Equitrac Office™
- doc-Q-manager
- doc-Q-route

¹ Also available is the Aficio™2075, similar to the Aficio™2051/2060 but offering a 75 pages per minute output speed.

For availability of models, optional apparatus and software, please contact your local Ricoh representative.



ISO9001:2000 certified
ISO14001 certified

Ricoh has determined that these products meet the ENERGY STAR guidelines for energy efficiency.

Ricoh believes in conserving the earth's precious natural resources.

All brand and/or product names are trademarks of their respective owners.

Specifications and external appearance are subject to change without notice. The colour of the actual product may vary from the colour shown in the brochure.

RICOH
Image Communication

For more information, please contact:

RICOH EUROPE B.V. Groenelaan 3,
P.O. Box 114, 1180 AC Amstelveen,
The Netherlands.
Phone: +31 (0)20-5474111
Fax: +31 (0)20-6418601

www.ricoh-europe.com