

High-speed
Multi-functional
Colour

Aficio™ CL7000 MF



RICOH
Image Communication

The All-in-one Colour Solution

Colour is on the rise in today's office environment. Whereas formerly colour was mainly used for client presentations, it is now included in a wide array of day-to-day business graphics, reports and in-house sales and marketing collateral. A logical evolution, taking into account that colour documents not only look more appealing and professional but are also easier to read and have higher retention. In short: colour provides effective communication. Designed with this in mind, Ricoh's new Aficio™CL7000 MF is a digital full colour all-in-one system, ready to fulfil your workgroup's B/W and colour needs. Multi-functional in the true sense of the word, this colour solution offers cost-effective print, copy, fax and scan capabilities in a space-saving modular design. The benefits of the Aficio™CL7000 MF are manifold: while saving time and space, you reduce costs and optimise your productivity. There's more: this all-round solution offers precise image quality at high speed: an astonishing 28 ppm in full colour and 38 ppm in B/W. At the same time, the Aficio™CL7000 MF is extremely easy to use and comes with strong network support and document management software.



Top-benefit Digital Modularity

The Aficio™CL7000 MF is the ideal all-in-one colour partner: print, copy, fax and scan capabilities in one compact device. Its combined functionalities allow you to save time and simultaneously cut costs. Equipped with the latest digital technology, this colour solution stands for reliable, versatile and user-friendly document handling.



Thanks to the Aficio™CL7000 MF's 'Scan Once, Copy Many' principle, high image quality is guaranteed from the first to the last set.

Time-saving Multi-functionality

You just received a fax, need a copy for a colleague and a few minutes ago you printed a financial report that has to be distributed. Instead of running from the fax via the copier to the colour printer and back to the copier, you can now take care of all these tasks from one single place and benefit from the Aficio™CL7000 MF's high speeds. As this system efficiently merges print, copy, fax and scan functionalities, wasting time and energy is history.

Cost-effective All-in-one Solution

Convinced multi-functional colour solutions still come with a high price tag? The Aficio™CL7000 MF provides proof to the contrary. Instead of investing in a separate colour printer, copier, fax and scanner, you can have them all in one affordable system.

Guaranteed First-class Quality

With the Aficio™CL7000 MF; miscopies, damaged originals and reduced image quality all belong to the past. Thanks to sophisticated digital technology, your B/W and colour originals are scanned only once and stored into memory from where they are copied as full sets –

including sets of colour copies. As all originals can be taken away after only one scan, damage from recirculative feeding is eliminated. This 'Scan Once, Copy Many' principle not only guarantees optimum image quality from the first to the last set but also reduces wear and tear on the scanner.

Renowned Ease of Use

As well as offering amazing functionality, the Aficio™CL7000 MF is very easy to operate. The time you previously spent on complicated office equipment you can now use to follow up on important issues. From colour printing to copying and faxing: with its easy job programming procedures, the large LCD panel guides you intuitively through all jobs, both simplex and duplex.

Printing Wizard

The Aficio™CL7000 MF connects to almost anything: USB1.1 and 2.0, IEEE 1394, parallel and Ethernet 10 base-T/100 base-TX as well as wireless LAN and Bluetooth. This system prints wireless in every WLAN mode (IEEE 802.11b), freeing your office from cables. With a Bluetooth card installed, you can directly print from PDAs and mobile devices in full colour. Whatever office environment you have, the Aficio™CL7000 MF fits in, easily and reliably.



Equipped with a large LCD panel, the Aficio™CL7000 MF makes operation as straightforward as possible.

Professional High-performance B/W and Colour

In recent years, general office productivity has been drastically increased by the introduction of digital B/W multi-functional products. Today, however, office environments are shifting more and more from B/W to colour. Ricoh's new Aficio™CL7000 MF offers the same functionality as B/W multi-functional products but adds colour capabilities to fulfil all your workgroup's B/W and colour needs.

Fast Document Feeding

For large jobs, documents up to A3 and double sided originals you can use the exceptionally fast 80-sheet ARDF, capable of scanning multi-page documents and ideal for heavy fax traffic.

Professional Document Handling

For professional document creation, this system is equipped with an optional 2,500-sheet finisher offering stapling, punching, duplex printing and collation for print as well as copy output.



Electronic Sorting

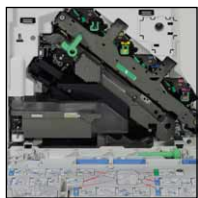
The Aficio™CL7000 MF supports electronic sorting for B/W as well as full colour documents. This function facilitates easy handling and allows you to receive your output in easy-to-remove batches.

The image on this double page is not a real photograph and slight differences in detail might appear.



High-speed Faxing

To boost the speed and accuracy of the Aficio™CL7000 MF's fax module, you can upgrade it with a G4 modem: ideal for heavy fax users. Via the optional ScanRouter™ software, faxes can also be automatically re-routed to any PC.



B/W and Colour at High Speed

For the Aficio™CL7000 MF deadlines are no problem whatsoever. Inside the system four separate drums guarantee high speed (28 ppm in colour, 38 ppm in B/W) and minimal waiting time.



Straightforward Colour Scanning

When scanning and faxing books, magazines or other non-standard originals there is no need to copy them first as they can be scanned directly from the platen glass. With the optional ScanRouter™ V2 Professional software, scanned documents can even be sent as e-mail attachments.



Easy Distribution

With the Aficio™CL7000 MF's optional multi-bin tray, print, copy and fax output can be sorted to different bins for easy recognition.

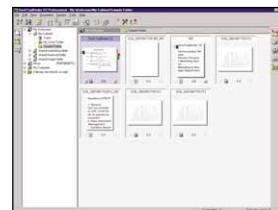


Practical Operation

Whether you are programming a copy job, scanning a document or sending a fax, operating the Aficio™CL7000 MF is extremely easy thanks to its large, self-explanatory LCD touch screen.

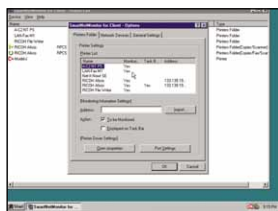
Tray-less Auto Duplex

While duplexing is approximately as fast as printing on one side of the page, the Aficio™CL7000 MF's tray-less auto duplex function also makes sure double sided copying does not take up any paper stock capacity.



Sophisticated Document Management

To store and manage the variety of information that comes to you daily in different formats, the Aficio™CL7000 MF comes with versatile document management software such as ScanRouter™ V2 and DeskTopBinder™ V2.



Efficient Device Management

Via the system's SmartNetMonitor™ software you can easily track the status and functions of any network printer from your desktop.

Maximising your Office Workflow

When it comes to business tactics, you demand speed, efficiency and versatility.

These criteria also apply to your office equipment. Even when deadlines are tight, the Aficio™CL7000 MF lives up to your expectations and offers highly productivity, straightforward printing and professional workgroup faxing.

High-speed Multi-functionality

Fast output is a necessity, whether it concerns prints, copies or fax messages. The Aficio™CL7000 MF's performance is astonishing: it sprints at 28 ppm in colour while maintaining a highly productive 38 ppm in B/W – producing double sided output is almost as fast. A short warm-up time and fast first copy speed (B/W: 8 seconds, colour: 10 seconds) further reduce waiting time. And your fax traffic is dealt with swiftly too thanks to the system's impressive G3 modem speed of 33.6 Kbps and fast 3-second transmission.

Printing Made Easy

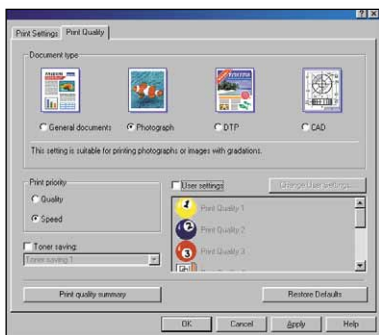
Printing with the Aficio™CL7000 MF has never been easier. Not only does Ricoh's printing language RPCS™ speed up the entire printing process, it also reduces your workload. As the interface of RPCS™ is icon-based, you can save different printer settings for a variety of print jobs and store them under your own icon. Starting a print job only requires one click saving you valuable time. Managing the Aficio™CL7000 MF is also straightforward: via Ricoh's SmartNetMonitor™ software, users and administrators can customise the display of status information, set user privileges and obtain job statistics. In addition, codes can be assigned to users to manage the number of prints/copies/faxes they make and the functions they use: an excellent way to allocate costs and reduce unnecessary expenses.

Secure and Trouble-free Printing

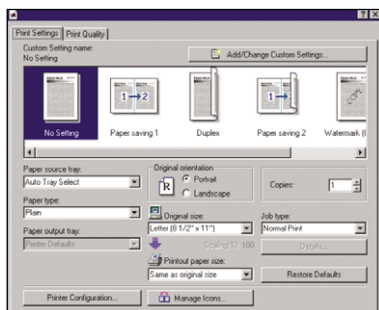
To guarantee the confidentiality of your documents, the Aficio™CL7000 MF supports Ricoh's Locked Print™ system. Through password protection this high-security function makes sure all sensitive information is handled securely. The system's Sample Print™ function, on the other hand, helps you avoid misprints and save on paper and consumables at the same time. When producing multiple sets, you can print the first set, verify print results and make any necessary changes before printing the remaining sets.

Smooth Office Communication

The Aficio™CL7000 MF is designed to streamline your office communications. Instead of walking to the machine, you can now transmit faxes directly from your own computer or any other networked PC thanks to the system's LAN-fax software. This saves you time and paper and guarantees better output quality at the receiving end. Via the optional ScanRouter™ Pro software, incoming faxes can also be redirected automatically to any PC in the network while scanned documents can be sent as e-mail attachments. Additionally, selecting recipients is done in seconds using the Aficio™CL7000 MF's 1,200 quick dial numbers. During peak times you can even send faxes and receive incoming ones simultaneously with the system's optional second fax line.



With RPCS™ you can even adjust the print quality of a specific job on your PC screen.



Thanks to Ricoh's awarded RPCS™ you can save your own print setting under a special icon.



With the Aficio™CL7000 MF's Locked Print™ function all sensitive information is handled securely.

The Complete Document Management Solution

E-mails, faxes, information in paper or digital format: a variety of data comes to you daily. Thanks to the Aficio™CL7000 MF, obtaining an organised document workflow is ever so easy. With Ricoh's document server (40 GB HDD required), this system becomes a sophisticated document manager.

Optimal B/W and Colour Scanning

With the Aficio™CL7000 MF scanning is a very straightforward and user-friendly process. By using the bundled ScanRouter™ V2 Lite software, you can scan documents to your PC via the ScanRouter™ delivery server. These scanned documents can then be merged with the bundled DeskTopBinder™ V2 Lite software. You can also use the bundled Twain driver for more professional scanning. Scan to e-mail is possible via the optional ScanRouter™ V2 Pro software. Scanning originals such as books and magazines is as easy as digitising regular documents. Using the system's ARDF, scanning is fast at 30 scans per minute for B/W and 25 scans per minute for full colour documents. Additionally, the system boasts an excellent maximum resolution of 600 dpi for professional colour image quality while scanning at 256 greyscales allows for crystal-clear image processing.

Optimised Data Storage

Set to streamline your entire document flow, the Aficio™CL7000 MF serves as a central document management device harbouring digitised information. Documents originating from copy, fax and scanner data, including colour files, can be stored in the system's optional document server which acts as a central document storage centre. With the bundled DeskTopBinder™ software, you can view thumbnails and print all the stored information on the document server. You can also search for documents by user name, file name or time created.

Efficient Merging and Distribution Options

To optimise your office's efficiency, you can combine documents with different settings created in a variety of applications via the system's bundled DeskTopBinder™ software. You can also merge originals scanned on the ARDF and platen glass.



Thanks to its excellent maximum resolution of 600 dpi, scanning with the Aficio™CL7000 MF means obtaining professional colour image quality.



Via DeskTopBinder™, you can combine documents created in different applications on your PC and print them as one file for easy distribution. The same applies to originals scanned on the ARDF and platen glass.



Aficio™ CL7000 MF

Specifications



COPIER

Copying process:

Twin laser beam scanning
& electro-photographic printing

Continuous copy speed (simplex)¹:

Black-and-white:
38 copies per minute
Full colour:
28 copies per minute

Resolution: 600 dpi

Multiple copy: Up to 99

Warm-up time:

Less than 101 seconds

First output speed:

Black-and-white: 8 seconds
Full colour: 10 seconds

Zoom: 25 - 400% (in 1% steps)

Memory:

Standard: 192 MB
Maximum: 384 MB
Hard Disk Drive (option): 40 GB

Dimensions (W x D x H):

730 x 770 x 1,200 mm

Weight: 130 kg

Power source: 220 - 240 V, 50/60 Hz

Power consumption:

Maximum 1.74 kW

Paper input capacity:

Standard:
2 x 500-sheet paper tray
100-sheet bypass tray
Maximum: 3,100 sheets

Paper output capacity:

Standard: 600 sheets
Maximum: 3,100 sheets

Paper size/weight:

Paper tray:
A3 - A5 / 60 - 105 g/m²
Bypass tray:
305 x 458 mm / 60 - 163 g/m²



PRINTER/SCANNER

Printer

Continuous print speed (simplex)¹:

Black-and-white:
38 prints per minute
Full colour: 28 prints per minute
Processor: RM7000C 500 MHz
Printer language/resolution:

PCL5c: 600 x 600 dpi
RPCS™: 600 x 600 dpi/1,200 x
600 dpi/1,200 x 1,200 dpi
Adobe® PostScript® 3™:
600 x 600 dpi/1,200 x 600 dpi
1,200 x 1,200 dpi

Interface:

Standard:
Bi-centronics IEEE 1284
Ethernet 10 base-T/100 base-TX
Option: IEEE 1394
USB1.1/2.0
Wireless LAN (IEEE 802.11b)
Bluetooth

Network protocol: TCP/IP, IPX/SPX
NetBEUI, AppleTalk

Supported networks:

Novell® NetWare® 3.12 or later
4.1 or later/5.0/5.1
Windows® 95/98/Me/NT4.0/2000/XP
UNIX Sun® Solaris 2.6/7/8
HP-UX 10.x/11.x
SCO OpenServer 5.0.6
RedHat® Linux 6.x/7.x
IBM® AIX v4.3/5L v5.1
Macintosh 8.6 or later
Macintosh X (native mode)



Scanner

Resolution: 600 dpi
Maximum original size: A3
Output formats: PDF/JPEG/TIFF
Bundled drivers: Network TWAIN



SOFTWARE

- SmartNetMonitor™
- DeskTopBinder™ V2 Lite
- ScanRouter™ V2 Lite



FAX (option)

Circuit: PSTN, PBX, ISDN (option)
Compatibility: ITU-T (CCITT) G3
additional Super G3 (option)
G4 (option)

Modem speed: Maximum 33.6 Kbps

Resolution:

Standard/detail:
200 x 100/200 dpi
Option: 400 x 400 dpi

Compression method:

MH, MR, MMR, JBIG (option)

Scanning speed:

Approximately 0.7 seconds
(200 x 100 dpi, A4)

Memory capacity:

Standard: 2 MB
(approximately 160 pages)²
Option: 26 MB

Memory backup:

Yes

OTHER OPTIONS

- Platen cover
- 80-sheet Auto Reverse Document Feeder
- 1/2 x 500-sheet paper trays
- 2,000-sheet large capacity tray
- 2,500-sheet finisher
- Multi-bin tray
- Duplex unit

¹ The duplex print speed is approximately 100% of the simplex print speed.

² Based on ITU-T #1 chart.

For availability of models, optional apparatus and software, please consult your local Ricoh supplier.



Ricoh has determined that this product meets the ENERGY STAR guidelines for energy efficiency.

Ricoh believes in conserving the earth's precious natural resources.

All brand and/or product names are trademarks of their respective owners.

Specifications and external appearance are subject to change without notice. The colour of the actual product may vary from the colour shown in the brochure.



For more information, please contact:

RICOH UK LTD, Ricoh House,
1 Pure Tree Crescent, Feltham
Middlesex, TW13 7HG
Phone: +44 (0)20-8261 4000
Fax: +44 (0)20-8261 4288

www.ricoh.co.uk